

BADEN-WÜRTTEMBERG — Home of smart mobility.

TOP INTERNATIONAL LOCATION FOR THE MOBILITY SECTOR

Climate change, digitisation, new technologies and market players as well as new user patterns are complex challenges that need to be mastered on the way to a new age of mobility. Baden-Württemberg (BW) as a technological pioneer therefore offers the best conditions: The German Southwest is renowned for excellent research and development, strong suppliers, first-class automotive manufacturers as well as outstanding professionals. Being a significant driver of innovation in the state,

manufacturers and suppliers are working closely with science and research on the automobile of the future in networks that span different industries and technologies. Together, they are advancing the development of electromobility, hydrogen and fuel cell technology as well as the automation and intelligent connectivity of vehicles. This makes BW an internationally outstanding development and production location for innovative mobility technologies of the future.



CENTRE OF THE GERMAN AUTOMOTIVE INDUSTRY

Around a quarter of the entire turnover of the German automotive industry is generated in BW.

FACTS & FIGURES

Companies (2022)	287	In addition, home of more than 1,000 supplier companies.
Turnover (2022)	135.7 billion euros	Industry with the highest turnover in BW.
People employed (2022)	217,000	Second-largest industrial employer in the German Southwest.
Foreign turnover (2022)	96.9 billion euros	Export ratio of 77.1%.
Expenditure on R&D (2021)	12.1 billion euros	About half of the R&D expenditure of the business sector in BW.

HOME OF
Mercedes-Benz Group, Porsche, Bosch, Mahle, ElringKlinger, ZF Friedrichshafen and many more



**ABOUT EVERY
4TH WORKPLACE**
of the German automotive industry is in BW.

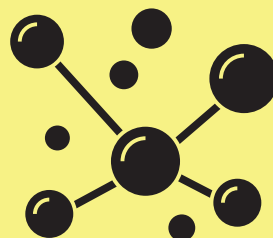


WORLDWIDE
one of the largest and most complete automotive clusters



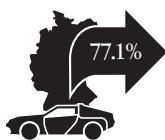
HOME OF AUTOMOTIVE PIONEERS

Benz, Daimler, Maybach, Porsche and many more



CONNECTED AND INTERNATIONALLY COMPETITIVE

thanks to over 25 clusters in the field of automotive technology.



**STRONG EXPORT
FOCUS**



Baden-Württemberg
THE LÄND



EXCELLENT IN STUDIES, RE-SEARCH & KNOWLEDGE TRANSFER

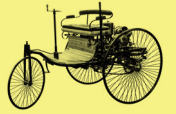
First-class degree programmes, research institutes and intensive cooperation between business and science.



1978
ANTILOCK BRAKING SYSTEM (ABS)
by Bosch



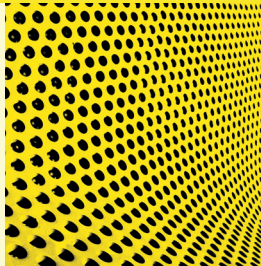
1994
NECAR 1: FIRST FUEL CELL VEHICLE
Mercedes-Benz Group



1886
BENZ PATENT MOTOR CAR
by Carl Benz



ARENA2036
research campus for mobility and production of the future



WORLD'S LARGEST EV CHARGING STATION
259 car charging stations with renewable energy



IMPORTANT FOR EUROPE AS A BATTERY LOCATION
Pioneering projects in battery cell production and battery research, including the CELEST research platform.



1900
ELECTRIC WHEEL HUB MOTOR, FIRST HYBRID VEHICLE
by Ferdinand Porsche



E-MOBIL BW
state agency for new mobility solutions and automotive



STRATEGIC DIALOGUE FOR THE AUTOMOTIVE SECTOR
for a successful transformation of the BW automotive industry

Find out more about the mobility industry in Baden-Württemberg (BW), the business location and your opportunities to invest:
www.bw-invest.de/en/



YOUR GATEWAY TO THE MARKETS OF THE EU



FOCUS ON
resource-efficient mobility, electromobility, innovative drive technologies, battery technologies, automation, connectivity and much more.

WE ARE YOUR PARTNER on the path to success!

Baden-Württemberg International is the central point of contact for foreign investors in Baden-Württemberg (BW) and provides assistance to companies and research institutions that either wish to settle or expand their operations in the German Southwest. Talk to us!



We provide information about BW.



We find the right partner and location for you.



We connect you with all important players.



We support you in administrative procedures.



Baden-Württemberg International GmbH (BW_i)
Lautenschlagerstraße 21/23
70173 Stuttgart, Germany
T +49 711 22787-0
info@bw-i.de
www.bw-i.de/en/



Follow us:
LinkedIn
X
Facebook